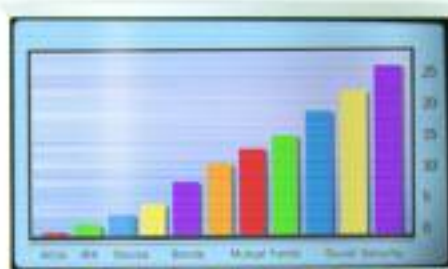


CL7300/CL7200

THE RICOH AFICIO CL7300/CL7200

THE RICOH

color printer series



Aficio®

RICOH®

THE RICOH AFICIO CL7300/CL7200

Taking **Print Speed** and **Productivity** to

a Whole New Level

Color Laser Printer...

All the capabilities... without all the costs

Professionals everywhere face the same challenge: How can I be more productive with fewer resources to work with? The answer: Make smarter investments in technology. The Ricoh® Aficio® CL7300 and CL7200 color laser printers allow you to do exactly that. These innovative color laser printers combine the most desirable printer functions with advanced finishing features to create truly unique offerings in today's printing marketplace. Not only are they functionality rich, but they also keep operating costs low to make color printing affordable for everyone in your office.



Shown CL7300 DT2 with optional booklet finisher



More productivity from start to finish

An impressive 733Mhz CPU, ample standard and maximum RAM, and a proven engine allow the CL7300 and CL7200 Series to achieve exceptional speeds: **28 ppm color and 32 ppm black & white for the CL7200, or an even more aggressive 35 ppm color and 35 ppm black & white for the CL7300.** And because these speeds are maintained in duplex mode, there's virtually no drop-off in productivity when printing double-sided documents.

Looking for productivity-boosting finishing without the high price? Then these are the printers for you. Unlike most laser printers in their class, the CL7300 and CL7200 Series feature **advanced finishing capabilities, including hole punch, booklet finisher and stapler/finisher options.**

Affordable color for everyone

As productive as the Ricoh CL7300 and CL7200 Series can make your organization in the short term, it's down the road where they really begin to pay off. In fact, when measured in terms of the total cost of toner and other supplies needed to operate, the cost per print is among the lowest of any color printers in their class. And when you add in their expandable paper capacities, advanced finishing and upgradeable path to multifunctionality, the CL7300 and CL7200 can offer the best combination of performance and price available today.

Paper handling...plus

The CL7300 and CL7200 Series go beyond simple paper shuffling. Thanks to custom configuration capability, workgroups can enjoy the exact paper handling design that suits their needs. The flexibility continues with a **3,100-page total paper capacity**, and the ability to process **up to 90 lb. index stock and 12" x 18" paper** through the bypass tray for full-bleed, 11" x 17" printouts.



Output to a variety of paper stocks — with sheet sizes up to 12" x 18" — and finish by holepunching, stapling, booklet-making and more

Built-in security

With the ever-increasing threat of information theft, secure systems are especially important. The CL7300 and CL7200 Series has you covered. **SmartDeviceMonitor**, which encrypts data via Internet Printing Protocol (IPP) with Secure Sockets Layer/Transport Layer Security (SSL/TLS) technology, thwarts attempts to tap sensitive or proprietary information. For added security, the **Network Data Protection** feature enables data encryption so that only the CL7300 and CL7200 Series can properly recreate the data stream.



Advanced features

Turning your CL7200 or CL7300 into a cost-effective multifunction solution is easy with the **IS300e Image Scanner upgrade**. Not only can you capture up to 11" x 17" full-color originals in 600 dpi resolution, the IS300e also functions as an occasional color and monochrome copier. Plus, innovation features like **Scan-to-Email**, **Scan-to-Folder FTP/SMB and Network TWAIN** capability allow you to dramatically streamline document distribution and storage.



The CL7300 and CL7200 Series also offers another great option: **Digital Still Camera Direct Print Availability**. Simply connect a PictBridge enabled digital still camera directly to the printer to make printing digital photos easier than ever.

All the right connections

The CL7300 and CL7200 Series is built to accommodate a variety of connections, including standard **10/100BaseTX**, **USB 2.0**, **optional IEEE 802.11b**, **Bluetooth**, and the all-new **Gigabit Ethernet Support**. The CL7300 and CL7200 Series are also equipped with all the right print drivers, including **genuine Adobe®PostScript® 3**, **PCL 5c**, **PCL 6** and **Ricoh RPCS**.

Open Architecture



Embedded Software Architecture

The Aficio CL7300 and CL7200 exceed industry standards with Ricoh's **Embedded Software Architecture™** — an innovative Java (J2ME) compatible software development platform. The **Embedded Software Architecture™** allows for the development of key applications that run on Ricoh MFPs and Laser Printers, dramatically enhancing your organization's workflow. The Aficio CL7300 and CL7200 can easily be customized to meet your needs by controlling features such as: the operation panel, printing, saving files and scanning. For more information on the **Embedded Software Architecture™**, platform please go to www.ricoh.com/esa.

Model	CL7200 base	CL7300D/ CL7200D	CL7300DT1/ CL7200DT1	CL7300DT2/ CL7200DT2	CL7300DL/ CL7200DL
					
Standard Paper Supply	500 sheets x 2 +100-sheet Bypass		500 sheets x 3 +100-sheet Bypass	500 sheets x 4 +100-sheet Bypass	500 sheets x 2 +100-sheet Bypass 2000-sheet LCT
Duplex	Optional	Standard			
CPU	733 MHz				
Connectivity	10/100BaseTX Ethernet and USB 2.0				
RAM	256 MB Standard/up to 512 MB Max				
HDD	Optional	Standard/Optional	Standard		
Paper Supply Options	1 x 500-sheet Paper Feed Unit 2 x 500-sheet Paper Feed Unit 1 x 2,000 Large Capacity Tray FAC2B Stand		Not Applicable		
Finishing Options	SR960 Sheet Finisher SR950 Booklet Finisher				

Help your workgroups achieve a whole new level of productivity

With everything the Aficio CL7300 and CL7200 Series has to offer — from aggressive color and black & white print speeds, to advanced finishing and paper handling options, to state-of-the-art security and networking features — getting more done is now easier than ever when you make smarter investments in technology.

RICOH®

THE RICOH AFICIO

CL7300/CL7200

System Specifications

Main Unit CL7300 – Part #CL7300D; Main Unit CL7200 – Part #CL7200

Configuration:	Desktop
Technology:	Laser-beam scanning, electro-photographic printing with dual-component toner development, four drums tandem method
Resolution:	True 1200 x 1200 dpi; 1200 x 600 dpi; 600 x 600 dpi
Printing Speed (@ 600 dpi):	Full-color: CL7300: 35-ppm/CL7200: 28-ppm; Black & white: CL7300: 35-ppm/CL7200: 32-ppm
First Print Speed:	Full-color: CL7300/CL7200: 12 seconds; Black & white: CL7300/CL7200: 11 seconds
Dimensions (WxDxH):	CL7300: 26.2" x 26.7" x 26.7" (670 x 678 x 745 mm) CL7200: 22.7" x 26.7" x 26.7" (575 x 678 x 745 mm)
Weight (Base Unit):	CL7300: 213.9 lb. (97 kg); CL7200: 187 lb. (85 kg)
Warm-up Time:	CL7300/CL7200: Less than 95 seconds
Power Source:	120V, 60Hz
Power Consumption:	CL7300: 1400W or less/CL7200: 1320W or less
Energy Saver Mode:	19W or less
Paper Capacity:	Up to 3,100 sheets
CL7200 (base unit):	1,100 sheets (500 x 2, plus 100-sheet Bypass Tray)
CL7300D/CL7200D (duplex):	1,100 sheets (500 x 2, plus 100-sheet Bypass Tray)
CL7300DT1/CL7200DT1:	1,600 sheets (500 x 3, plus 100-sheet Bypass Tray)
CL7300DT2/CL7200DT2:	2,100 sheets (500 x 4, plus 100-sheet Bypass Tray)
CL7300DL/CL7200DL:	3,100 sheets (500 x 2, plus 100-sheet Bypass Tray, 2,000-sheet LCT)
Output Capacity (Std/Max):	600 sheets/3,100 sheets
Paper Sizes (Max.):	Paper Trays/Optional Trays: 8.5" x 11", 8.5" x 14", 11" x 17", 7.5" x 10.5", 8" x 13", 8.25" x 13", 8.5" x 13", A5, A4, A3 Bypass Tray (PCL 5c/PCL 6/PS3 drivers): Width: 3.5" to 12" (90 to 148 mm); Length: 5.8" to 18" (148 to 457 mm); RPCS driver: Up to 49.6" (1,260 mm)
Paper Weights:	Paper Tray/Optional Tray: Bond 16 - 28 lb. (60 - 105 g/m ²); Bypass Tray: Bond 16 - 90 lb. / 43 Index (60 - 163 g/m ²); LCT: 16 - 28 lb. Bond (60 - 105 g/m ²)
Acceptable Paper Types:	Plain paper, labels, transparencies, envelopes, glossy paper, banner paper, recycled paper
Safety Regulations:	UL1950/cUL; CSA No. 950; FDA-21; CFR-J; FCC Class B

Controller Specifications

CPU:	Celeron 733MHz
Printer Languages:	Adobe PostScript 3, PCL 5c and PCL 6 emulation, Ricoh RPCS (Refined Printing Command Stream), PDF Direct, and optional Direct Camera Printing with PictBridge compatible camera
Fonts:	PS 3: 136 type 1 fonts; PCL: 45 fonts (TrueType: 10 fonts, Intellifonts: 35 fonts)
Memory:	256MB RAM standard; Up to 512MB RAM maximum (1 free slot)
Standard Interfaces:	10/100BaseTX Ethernet, USB 2.0
Optional Interfaces*	IEEE 802.11b Wireless LAN, Bluetooth Wireless, IEEE 1284 Parallel, IEEE 1394, Gigabit Ethernet, USB Host *Only one additional interface can be installed.
Network Protocols:	TCP/IP, Novell IPX/SPX, SMB (NetBEUI), Net BIOS over TCP/IP, AppleTalk
Drivers:	RPCS, PCL 5c/6, and PC: Windows 95/98SE/Me/NT 4.0/2000/XP/Server 2003; PS: Macintosh 8.6 or later, OS X (v.10.1, 10.2, 10.3); UNIX: Solaris, HP-UX, Red Hat Linux, SCO
Print Utilities:	SmartDeviceMonitor for Administrator and Client, Printer Utility for Mac, DesktopBinder V2 Lite, Font Manager 2000

Controller Options

40 GB Hard Disk Drive	Part #402089
IEEE 1394 Interface Board Type B *	Part #411264
IEEE 1284 Interface Board Type A*	Part #411699
IEEE 802.11b Wireless LAN Interface Type H*	Part #402378
Bluetooth Interface Board Type 3245*	Part #412178
USB Host Interface*	Part #402304
Gigabit Ethernet Interface Board*	Part #402302

*Only one additional interface can be installed.

User Account Enhance Unit Type E - Part # 402270; Monitors printer usage and restricts users' access via Web Image Monitor and SmartDeviceMonitor. 30 user codes ship standard. This option provides for a total of 500 user codes.

Direct Camera Print Card Module (SD Card) - Part # 402361; Enables direct printing from a PictBridge enabled digital camera, without a PC (requires optional USB Host Interface Part # 402304).

Memory Options	144-pin DIMM SD-RAM (PC133 compliant); Maximum of 512MB
	64MB SDRAM Type C Part #001178MIU
	128MB SDRAM Type C Part #001179MIU
	256MB SDRAM Type C Part #001180MIU

Paper Handling Accessories

1 x 500-sheet Paper Feed Unit	Part #402431
2 x 500-sheet Paper Feed Unit	Part #402432
2,000-sheet Large Capacity Tray	Part #402433
Stand FAC28	Part #402373
Duplex Unit	Part #402088

Booklet Finisher SR950 Part #412143

Paper Size:	8.5" x 11" to 11" x 17"
Paper Weight:	16 - 34 lb. Bond (60 - 128g/m ²)
Stack Capacity:	Sort: 1,000 sheets (8.5" x 11"); 500 sheets (8.5" x 14" or larger) Staple: 1,000 sheets or 30 sets (8.5" x 11"); 500 sheets or 30 sets (8.5" x 14" or larger) Folding: 1 set = 6 - 10 sheets: 10 sets; 1 set = 2 - 5 sheets: 20 sets

Staple Paper Size:	8.5" x 11" to 11" x 17"
Staple Paper Weight:	17 - 21 lb. Bond (64 - 80 g/m ²)
Staple Capacity:	50 sheets (8.5" x 11"); 25 sheets (8.5" x 14" or larger)
Staple Positions:	Normal Staple (Top, Bottom, Left 2), Saddle Stitch
Hole Punch:	Available as option for SR950 Part #411585
Number of Holes:	2 or 3, switchable

Sheet Finisher SR960 Part #412139

Number of Trays:	2
Upper Tray:	Paper Size: 8.5" x 11" to 11" x 17"; Paper Weight: 16 - 28 lb. Bond (60 - 105 g/m ²) Stack Capacity: 500 sheets 8.5" x 11"; 250 sheets 8.5" x 14" or larger

Lower Tray:	Paper Size: 8.5" x 11" to 11" x 17"; Paper Weight: 16 - 28 lb. Bond (60 - 105 g/m ²); Stack Capacity: 2,000 sheets 8.5" x 11"; 750 sheets 8.5" x 14" or larger
-------------	-------------------------------------------------------------------------------------------------------------------------------------------------------------------------------

Staple Paper Size:	8.5" x 11" to 11" x 17"
Staple Paper Weight:	17 - 24 lb. Bond (64 - 90 g/m ²)
Staple Capacity:	50 sheets (8.5" x 11"); 30 sheets (8.5" x 14" or larger, mixed-size sets)
Staple Positions:	Upper Left and Upper Right: 1 staple diagonal; Upper Left and Upper Right: 1 staple horizontal; Left, Top, Right margins: 2 staples
Hole Punch:	Available as option for SR960 Part #410785
Number of Holes:	2 or 3, switchable
Punch Positions:	Top, Left, Right margins

Notes:

- Only one of 500 x 1,500 x 2, 2,000-sheet Large Capacity Tray or Stand can be installed.
- Sheet Finisher or Booklet Finisher requires a duplex unit and a minimum 1,600 sheet paper capacity.
- Sheet Finisher and Booklet Finisher cannot be installed simultaneously.
- Both Finishing units can be configured with an optional hole punch.

IS300e Image Scanner (MFP Upgrade Option) Part #IS300e

Scanning Functionality	Scan-to-Email; Scan-to-Folder FTP/SMB, Network TWAIN scanning, Scan-to-Print
IS300 Image Scanner Table for 7200/7300 Color Printer Part # 402267	

It is recommended that the IS300e scanner table is sold only with the DT1, DT2, or DL configurations. The stand is adjustable and can accommodate the different heights. The stand can not be used with the CL7200 base model (with duplex option) and CL7300D/CL7200D version. You must purchase a minimum of 1 additional paper tray in order for these units to accommodate the scanner table.

Consumables*

Color LP Toner Cartridge (Black) Yield:	24,000 pages @ 5%	Part # 888442
Color LP Toner Cartridge (Yellow) Yield:	10,000 pages @ 5%	Part # 888443
Color LP Toner Cartridge (Magenta) Yield:	10,000 pages @ 5%	Part # 888444
Color LP Toner Cartridge (Cyan) Yield:	10,000 pages @ 5%	Part # 888445
Black Image Drum Yield:	40,000 pages	Part # 402310
Color Image Drum Yield:	40,000 pages	Part # 402305
Development Unit (Black) Yield:	80,000 pages	Part # 402308
Development Unit (Color) Yield:	80,000 pages	Part # 402306
Fusing Unit Yield:	80,000 pages	Part # 402307
Waste Toner Bottle Yield:	40,000 pages	Part # 400662
Staple Cartridge for SR960	5,000 shots	Part # 410801
Refills for SR960 Staple Cartridge	5,000 x 3 shots	Part # 410802
Staple Cartridge +1 refill for SR950	5,000 shots	Part # 411730

*CL7300/CL7200 ship with starter toner cartridges at 12,000 pages for black toner and 5,000 pages for color toner @ 5% coverage; all other consumables ship at full yield.

Specifications subject to change without notice.



RICOH®

Image Communication

Ricoh Corporation, Five Dedrick Place, West Caldwell, NJ 07006
Phone: (973) 882-2000 • Web Site: <http://www.ricoh-usa.com>

The Ricoh Aficio CL7300/CL7200 is warranted against defects for a period of ONE (1) YEAR from the date of purchase.
Consumables are warranted for a period of ninety (90) days from the date of purchase. Please see warranty shipped with the product for more details.



EPA 2000 Office Products Partner of the Year (5th consecutive year)
EPA 2000 Labeling Partner of the Year
Ricoh Corporation has determined that this product meets the Energy Star® guidelines for energy efficiency.

Printed in U.S.A on recycled paper because Ricoh cares.

Windows® and Windows® 3.1/95/98/Me/NT4.0/2000/XP are registered trademarks of Microsoft Corporation. PCL® is a registered trademark of Hewlett-Packard Company. Ricoh® is a registered trademark of Ricoh Company, Ltd. All other trademarks are the property of their respective owners.

PA-0493