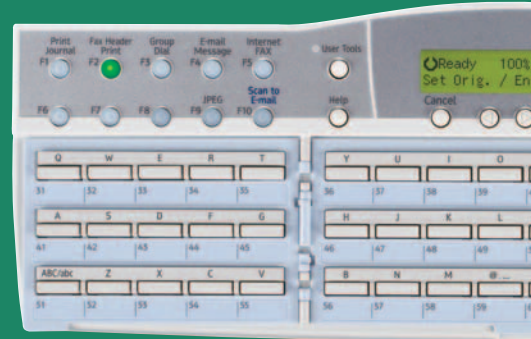


Ricoh FAX4430L/FAX4430NF  
Facsimile  
High-Performance Faxing For Workgroups

**RICOH**



efficient



convenient



powerful



# Ricoh FAX4430 Series

Advanced document communication tools for superior workflow. Large workgroups perform hundreds—if not thousands—of individual document management tasks every day. To maintain high productivity in these demanding, fast-paced environments, you need easy-to-use systems that deliver exceptional efficiency and productivity. Like the RICOH® FAX4430L, which provides quick fax transmission speed and convenience copying for stand-alone applications. Or the network-ready Ricoh FAX4430NF, which comes standard with a full range of advanced fax features, plus copying and scanning. Both systems also offer optional printing for additional versatility.



# ProductiveReliableIntuitive

## Unmatched efficiency

With the Ricoh FAX4430 Series, end-users can access a single, powerful fax system that can handle a complete array of essential document communication tasks with speed, ease and convenience.

- Ensure quick transmission for all fax documents—up to 30 pages-per-minute<sup>1</sup>.
- Double your transmission capacity with an optional second Super G3 line. It operates independently, so you can use both lines for transmission or dedicate one line for transmission and a second for reception.
- Scan important fax documents, then walk away with the original instead of leaving the document in the tray.
- Maximize productivity and minimize interruptions in high-usage environments with a total paper capacity of 1,350 sheets (with all options).
- Reduce paper consumption with duplex fax reception and duplex scanning (except for color Scan-to-Email).

<sup>1</sup> Approximately 2 seconds-per-page at 33.6 Kbps with JBIG is dependent upon optimal line quality; and customer performance may vary by location.

## High-performance faxing

The Ricoh FAX4430NF comes equipped with advanced capabilities you can use to significantly reduce or even eliminate the typical costs of global document distribution.

- Send faxes at no cost with Internet faxing (T.37), which works the same way as Scan-to-Email. In this case, the e-mail address is a similarly equipped Internet fax.
- Large companies with multiple networked locations can deliver documents in real time—at no charge—with IP faxing (T.38). This zero-cost method sends directly to the IP address of the receiving fax. Transmission is instantaneous.
- Companies that have implemented Voice over IP (VoIP) technology can incorporate the Ricoh FAX4430NF in their communications architecture without connecting the system to analog phone lines.
- Enhance your productivity right from the desktop with LAN faxing. This capability allows you to send faxes to any other G3 fax system without leaving your PC. The LAN Fax Cover Sheet Editor even creates customized cover sheets.
- Send any hardcopy document as a PDF or JPEG—whether full-color or black & white—with standard Scan-to-Email.

## Convenient laser printing

Use the Ricoh FAX4430 Series to accomplish much more than fax jobs when you add the optional 15 page-per-minute (ppm) PCL 5e/PCL 6 printer function.

- Handle a wide variety of printing tasks, including paper-saving duplex output, auto paper tray selection, slip sheet insertion and watermark printing.
- Print on specialty stocks, such as envelopes and labels, with the optional 100-sheet Bypass Tray.



Color Scan-to-Email offers a secure, paperless way to deliver virtually any scanned document—including color photos, brochures, maps and plans.



Accommodate lengthy, multi-page documents (up to 47.2" long) with the 70-sheet Automatic Document Feeder.



Deliver any document to the Ricoh FAX4430NF for transmission, right from your PC, with the LAN faxing feature.

# FaxCopyScanPrint

## Superior productivity

Both the Ricoh FAX4430L and the Ricoh FAX4430NF are engineered to help you operate as productively as possible. From the systems' outstanding overall durability to their specific sets of features, these systems have the time-saving tools you need to streamline workflow.

- Conveniently create digital black & white copies with 15 ppm speed.
- Expect crisp, clean 600 x 600 dpi image quality for all digital copies, incoming fax documents and printed pages.
- Eliminate the need to organize sets manually with automatic collation for all output (fax, copy, print).
- Count on fast, high-resolution scanning for multi-page documents—up to 1.3 seconds-per-page for black & white or 4.0 seconds-per-page for color—with the 70-sheet Automatic Document Feeder.

## User-friendly design

No matter what a fax system can do, it will not help your workgroup improve efficiency if it is difficult to use. That is why the Ricoh FAX4430 Series incorporates a straightforward design for simple, intuitive operation.

- Find exactly what you need on the easy-to-use control panel, including a familiar QWERTY keyboard and 22-character x 2-line backlit LCD for checking system status and settings.
- Assign complex key sequences to one of 10 programmable User Function Keys for one-touch operation.
- Send fax documents to your most frequent recipients with one-touch convenience using 90 Quick Dials and 200 Speed Dials.
- Scan color originals at full resolution or with a halftone screen using the Color Scan/Halftone Key (standard on Ricoh FAX4430NF).
- Select the appropriate level of detail for fax transmission with the High-Resolution Scan Key.

## Easy network integration

When connected to the network, the Ricoh FAX4430NF is easy to install and simple to manage. So your IT department can add it to the network with confidence.

- Ensure error-free configuration with industry-standard Ethernet connectivity, while the WebImageMonitor feature supports remote administration.
- Control access to all transmission capabilities—including Scan-to-Email, faxing, IP faxing and LAN faxing—with Server Domain Authentication.
- Streamline network integration with Dynamic Host Configuration Protocol (DHCP).



## Your Environmental Partner



Ricoh continues its long-standing commitment to developing office solutions with environmentally friendly and superior energy- and supply-saving features, without compromising productivity, including:

- Power-Saving Sleep Mode
- Duplex and Combine Copy Modes
- Minimal Ozone Emissions
- Restriction of Hazardous Substances Compliant (RoHS)

# CompactAffordableFlexible

## Designed for Lasting Quality and Convenience

### 70-sheet Automatic Document Feeder (standard)

Scans black & white pages in 1.3 seconds, color pages in 4.0 seconds.

### Automatic Duplexing (standard)

Cut paper usage in half for fax, copy or print output.



### Easy-to-use Control Panel

Intuitive design and a backlit LCD make it easy to finish any task.

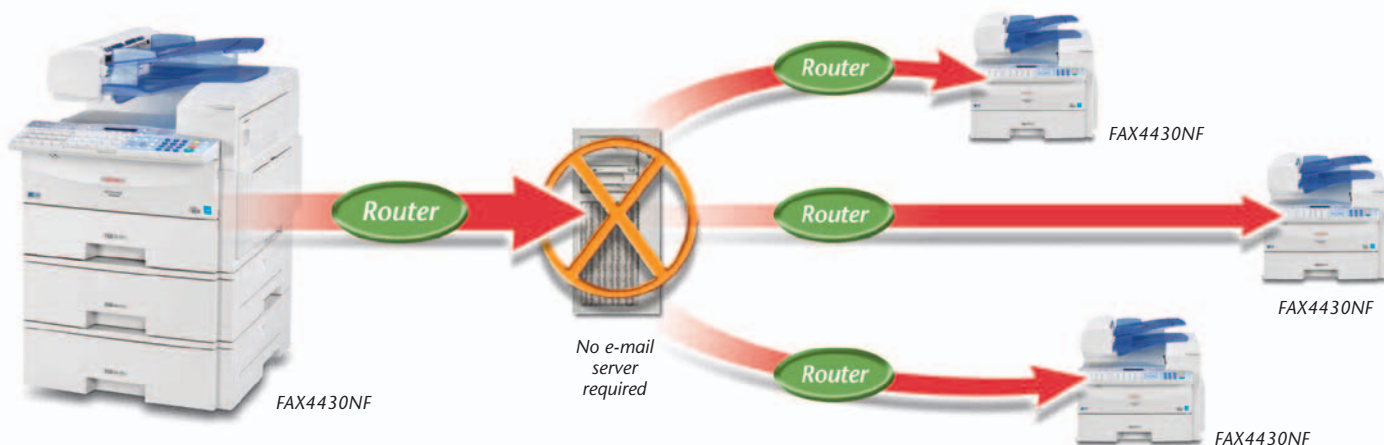
### 100-sheet Bypass Tray (standard on the Ricoh FAX 4430NF)

Print or copy on labels, envelopes and other special paper stock.

### 1 or 2 x 500-sheet Paper Feed Units (optional)

Boost total paper capacity to 1,350 sheets.

## IP Faxing Capabilities



IP faxing capabilities on the Ricoh FAX4430NF enable end-users to deliver any scanned file virtually instantly with 600 dpi quality, with no phone costs and no e-mail server.

# Ricoh FAX4430 Series

## System Specifications

### Specifications

<b>Type</b>	Desktop Facsimile
<b>Recording Method</b>	Laser
<b>ITU-T Compatibility</b>	Group 3 (V.34); ECM
<b>Modem Speed</b>	33.6 Kbps with Auto fallback
<b>Transmit Speed (Max.)</b>	2 seconds*
<b>Data Compression</b>	MH/MR/MMR/JBIG
<b>Scan Speed (Letter, Standard Resolution)</b>	1.3 seconds-per-page** B&W 4 seconds-per-page Color
<b>Dual Access</b>	Standard
<b>Document Memory (Standard)</b>	16 MB (1,280 pages**)
<b>Document Memory (Optional)</b>	40 MB (2,200 pages**)
<b>Auto Dialer</b>	90 Quick Dials, 200 Speed Dials, 9 Group Dials
<b>User Function Keys</b>	10 (dedicated keys)
<b>Document Memory Backup</b>	12 hours with Standard Memory; Infinite with 40 MB Memory Card
<b>Automatic Document Feeder</b>	Standard (70 sheets)
<b>Document Width/Scan Width/Length (Max.)</b>	8.6"/8.48"/47.2"
<b>Scan Resolution</b>	Standard: 200 x 100 dpi Detail: 200 x 200 dpi 300 dpi (Scanner only) Super Fine: 400 x 400 dpi Extra Super Fine: 600 x 600 dpi
<b>Halftone</b>	64 levels with ARGONA***
<b>Print Speed (Max.)</b>	15 pages-per-minute
<b>Print Resolution (Max.)</b>	600 dpi (fax and printer)
<b>Resolution Enhancement</b>	Super Smoothing HQ™
<b>Recording Width/Paper Size (Max.)</b>	8.26"/8.5" x 14"
<b>Paper Capacity (Standard)</b>	4430L: 250-sheet Paper Tray (Letter) 4430NF: 250-sheet Paper Tray (Letter) + 100-sheet Bypass Tray (Total 350 sheets)
<b>Paper Capacity (Optional)</b>	500-Sheet (Letter / Legal) x 2 Paper Feed Units
<b>Paper Capacity/Sources (Max.)</b>	1,350 sheets/4
<b>Multi-Copy Capacity</b>	Up to 99 (with duplexing)
<b>LCD Display Size</b>	2 lines (22 characters each line)
<b>Power Consumption</b>	Max: Less than 1000W Min: Less than 2W (FAX4430L), 6W (FAX4430NF)
<b>Power Requirements</b>	120V, 60Hz
<b>Environment</b>	59 to 77°F, 30 to 70% RH
<b>Dimensions (WxDxH)</b>	4430L: 17.6" x 21.7" x 21.6" 4430NF: 17.6" x 21.7" x 16.2"
<b>Weight</b>	4430L: 61.7 lbs. 4430NF: 50.7 lbs.
<b>Consumable Yields</b>	Toner Cartridge: 5,000**
<b>Photoconductor Unit</b>	45,000 pages
<b>Optional PFU</b>	17.0" x 16.1" x 5.5" (WxDxH); Weight 10.6 lbs.

### Internet FAX/IP FAX/VoIP/Scan-To-Email (NIC FAX UNIT)—Standard on FAX4430NF

<b>Network/Connection</b>	LAN, 100Base-TX/10Base-T Ethernet, RJ-45
<b>Transmission Speed</b>	10/100 Mbps
<b>Document Size</b>	8.5" x 11", 8.5" x 14"

### Compatibility

Internet Fax: ITU-T Rec. T.37  
IP Fax: ITU-T Rec. T.38

### Scan Resolution Internet Fax

Standard: 200 x 100 dpi  
Detail: 200 x 200 dpi  
Standard: 200 x 100 dpi  
Detail: 200 x 200 dpi  
Super Fine: 400 x 400 dpi  
Extra Super Fine: 600 x 600 dpi  
Std. B&W: 200 x 100 dpi  
Std. Color: 100 x 100 dpi  
Detail: 200 x 200 dpi

### Scanner

300 dpi: 300 x 300 dpi  
Super Fine: 400 x 400 dpi  
Extra Super Fine: 600 x 600 dpi  
E-mail Trans.: SMTP, TCP/IP  
E-mail Rec.: POP3, SMTP,  
IMAP4, TCP/IP

### Internet Protocols

IP Fax: T.38 Annex B, TCP, UDP/IP  
Scanner: FTP, TCP/IP

### E-mail Format

Single/Multi-Part, MIME

### Attached File Format

Conversion  
TIFF-F (MH Compression), DCX,  
JPEG, PDF

### Security

POP before SMTP, SMTP  
Authentication, APOP, Server  
Domain Authentication (Windows  
2000, Windows Server 2003,  
Windows NT4.0)

### Dynamic Host Configuration Protocol (DHCP)

Standard

### WebImageMonitor

Standard

### NIC Fax Features—Standard on FAX4430NF

#### Internet Fax & Scan-To-Email:

Backup Transmission/Reception  
Color/B&W Scan Modes  
E-mail Subject/Message/Suffix Templates  
Error Mail Notification  
Journal by E-mail  
Reception Confirmation  
ScanRouter Lite Included  
**IP Fax (Real Time, T.38):**  
Reception Confirmation  
**VoIP Compatibility**  
**LAN Fax (Software Included):**  
Address Book, Broadcast, Convenience Printing

### General System Features

Automatic Collation, Clock (with Auto Summer Time Adjustment),  
Counters (Tx/Rx/Scn/Prt), Dual Access (Multitasking), Scan  
Duplex Documents, Energy Saver Mode, Help List, Keystroke  
Programs (90), Label Registration for Quick/Speed Dials,  
Personal Codes, Photo (Halftone) Mode, PIN Code Protection,  
Power Failure Report, QWERTY Keypad, Remaining Memory  
Indicator, Restricted Access, User Function Keys

### Fax Communication Features

Chain Dialing, Communication Failure Report, Error Report,  
Fax Headers (2), Journal (Auto/Manual Print), Lists  
(Quick/Speed/Prog./Grp/User Function), Memory File Transfer,  
Monitor Speaker, No Document, No Dial, On Hook Dialing,  
Polling Trans./Reception, Quick Dial Label Print, Redial  
(Auto/Manual), Shortened Protocol, Telephone Directory

### Fax Transmission Features

Auto Document, Auto Page Retransmission, Auto Reduction  
(Transmit), Backup File Transmission, Batch Transmission,  
Blank Document Detection, Forwarding, Immediate/Memory  
Transmission, ITU-T Sub-Address, Label Insertion, Memory  
Storage Report, Page Count, Page Retransmission, Quick  
(Parallel) Memory Transmission, Send Later, Serial Broadcast  
(Immediate/Later), Simultaneous Broadcast (via opt. 2nd G3  
Modem), Transfer Request, Transfer Transmission, Transmission  
Confirmation Report, Transmission Failure Report, Transmission  
Reserve, Verification Stamp

### Fax Reception Features

Authorized Reception, Confidential Reception (with or without  
ID), Continuous Polling, Checkered Mark (Document  
Separation), Duplex Fax Reception, Memory Lock, Memory  
Polling, Multi-Copy Reception, Multi-Polling Reception,  
Reception Time Print, Specified Tray Select (with Optional Paper  
Feed Unit), Substitute Reception, Two-in-one Reception

### Printer Features (Optional with FAX4430L)

<b>Print Speed (Letter)</b>	15 pages-per-minute
<b>Printer Resolution (Max.)</b>	600 x 600 dpi
<b>Interface</b>	Standard: IEEE 1284 ParallelOption: 100Base-TX/10Base-T
<b>Printer Memory (Std./Max.)</b>	16 MB/144 MB
<b>Operating System</b>	Windows 95/98/Me/NT 4.0/2000/ XP/Vista****
<b>Printer Control Language</b>	PCL 5e/6; PostScript2 Compatible (Optional)
<b>Other Features</b>	Duplex, Collate, Slip Sheet, Page Protect, Auto Continue, Auto Tray Select, Tray Lock, Font Storage, Watermark, Toner Saver, Edge Smoothing, User Code, Bypass Tray Print

### Options

100-sheet Bypass Tray Type 300 (FAX4430L only)  
32/64/128 MB Printer Memory Type B  
40 MB Memory Card (Feature Expander) Type 410  
500-sheet Paper Feed Unit Type P5480 (up to two can be installed)  
Cabinet Stand  
G3 Interface Unit (2nd 33.6 Kbps Line) Type 410  
Network Interface Board Type 1018 (see Printer Features)  
NIC Fax Unit Type 410 (FAX4430L only)  
PostScript2 Interface Unit Type 1018  
Print Controller  
Telephone Handset Type 1018

### Supplies

ADF Maintenance Kit Type 300  
Marker Refill Type 30  
Toner Cartridge Type 1160  
Photoconductor Unit Type 1013

\*Approximately 2 seconds per page at 33.6 Kbps with JBIG is dependent upon optimal line quality, and customer performance may vary by location.  
\*\*Based on ITU-T Test Chart #1 in Standard resolution.  
\*\*\*ARGONA Advanced Ricoh's Graphic Operation by New ASIC based on diffusion method.  
\*\*\*\*Windows Vista will be available after launch. Please check our website for release dates.

### Connectivity Comparison

	Ricoh FAX4430L	Ricoh FAX4430NF
Color Scan-to-Email	Optional	Standard
Internet Fax	Optional	Standard
IP Fax	Optional	Standard
LAN Fax	Optional	Standard
Network Scan	Optional	Standard
PC Print	Optional	Optional
Network Print	Optional	Optional
PS2 Module	Optional	Optional
Web Browser Monitor	Optional	Standard

# RICOH

www.ricoh-usa.com

Ricoh Americas Corporation, Five Dedrick Place, West Caldwell, NJ 07006  
Ricoh® and the Ricoh Logo are registered trademarks of Ricoh Company, Ltd. Windows® and Windows® 95/98/Me/NT4.0/2000/XP/Vista are registered trademarks of Microsoft Corporation. Macintosh®, Mac® OS and AppleTalk® are registered trademarks of Apple Computer, Inc. Adobe® and PostScript® are registered trademarks of Adobe Systems, Inc. PCL® is a registered trademark of Hewlett-Packard Company. RPCS™ is a trademark of Ricoh Company, Ltd. All other trademarks are the property of their respective owners. Printed in U.S.A. on recycled paper. Print speed may be affected by network, application or PC performance. Specifications and external appearances are subject to change without notice. Products are shown with optional features.

